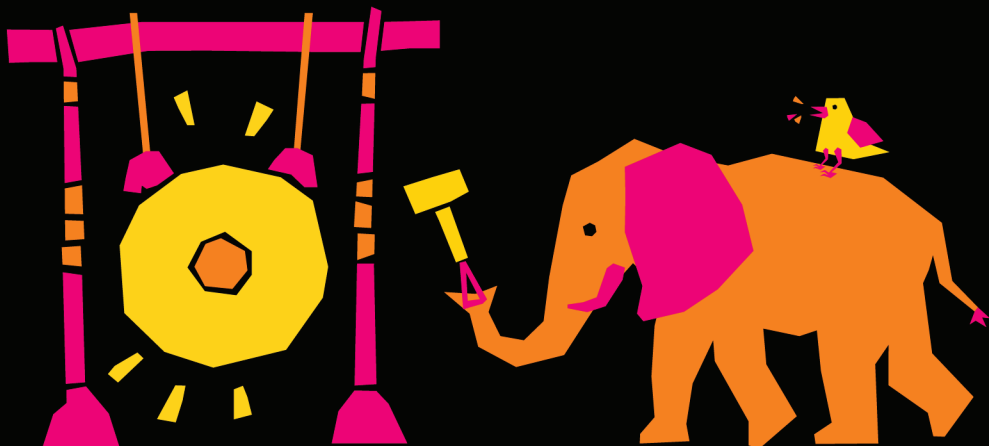


BYU COLLEGE OF FINE ARTS AND COMMUNICATIONS
BYU SCHOOL OF MUSIC

THE EXCITING MUSIC OF BALI!

GAMELAN BINTANG WAHYU



**ALL AGES WELCOME
FREE ADMISSION
DE JONG CONCERT HALL
SATURDAY, MARCH 26, 2022, 11 AM**

BEVERLEY TAYLOR SORENSON FAMILY CONCERT SERIES
BYU GAMELAN ORCHESTRA, DIRECTED BY JEREMY GRIMSHAW

Today's Concert Program

Gamelan Bintang Wahyu presents:

"The Exciting Music of Bali!"

BYU's Gamelan Orchestra

Jeremy Grimshaw, *director*

In today's concert, you will witness the amazing rhythms and melodies of the drums, gongs, bamboo flutes, and bronze xylophones of the Gamelan Orchestra from the island of Bali. This music from Southeast Asia is one of the world's oldest and richest musical traditions, and the virtuosity required to coordinate its many layers will amaze you!

Procession

Gongs, drums & cymbals

Kecak

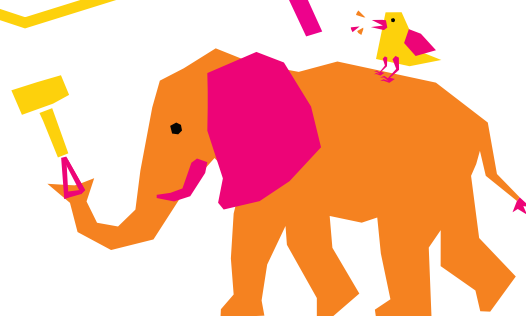
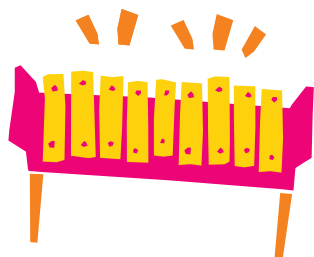
All vocal sounds

Sekar Jupun

All the instruments, including gong, gong chimes, drums, bronze xylophones, bamboo flutes & mallets

Beleganjur

Gongs, drums & cymbals



What is a Gamelan?

Gamelan is a percussion orchestra in Southeast Asia. Gamelan from the island of Bali includes bronze xylophones, drums, cymbals, bamboo flutes, and big, booming bronze gongs.



Why is the BYU Gamelan called "Bintang Wahyu"?

Our gamelan instruments were built by I Wayan Beratha, one of Bali's most famous musicians and gamelan makers.

The bronze bars were carefully tuned by hand. The carvings on the instruments were also done by hand. The carvings show scenes from various Hindu stories and animal fables.

Two of the instruments are decorated with the group's name, *Bintang Wahyu*. Bintang means "star," and Wahyu means "vision" or "revelation." So, the name means "Star of Revelation."

But it is also a play on words: if you take the four syllables—**BI**—NTANG—**WA**—HYU, and take out the second one, it sounds like "**B-Y-U!**"

The Instruments

Composers use many musical instruments to make their musical inspirations come to life in sounds.

- Circle the instruments you hear play during the concert!



- Draw a line from the instruments above to the correct family name below. (Hint: See page 5)

Gong Chime

Drum

Bronze
Xylophone

Bamboo
Flute

Gong

Families of Instruments in a Gamelan

There are five kinds of instruments in a Balinese gamelan.



GONG CHIME
(Rayong)



DRUM
(Kendang)



BAMBOO FLUTE
(Suling)



**BRONZE
XYLOPHONE**
(Gangsa)



GONG
(Gong ageng)

Word Search

Below are 20 terms about Bali and the gamelan. A description of each term is in **italics**. Find and circle the terms in **bold**. They can go across, up, down, or diagonally.

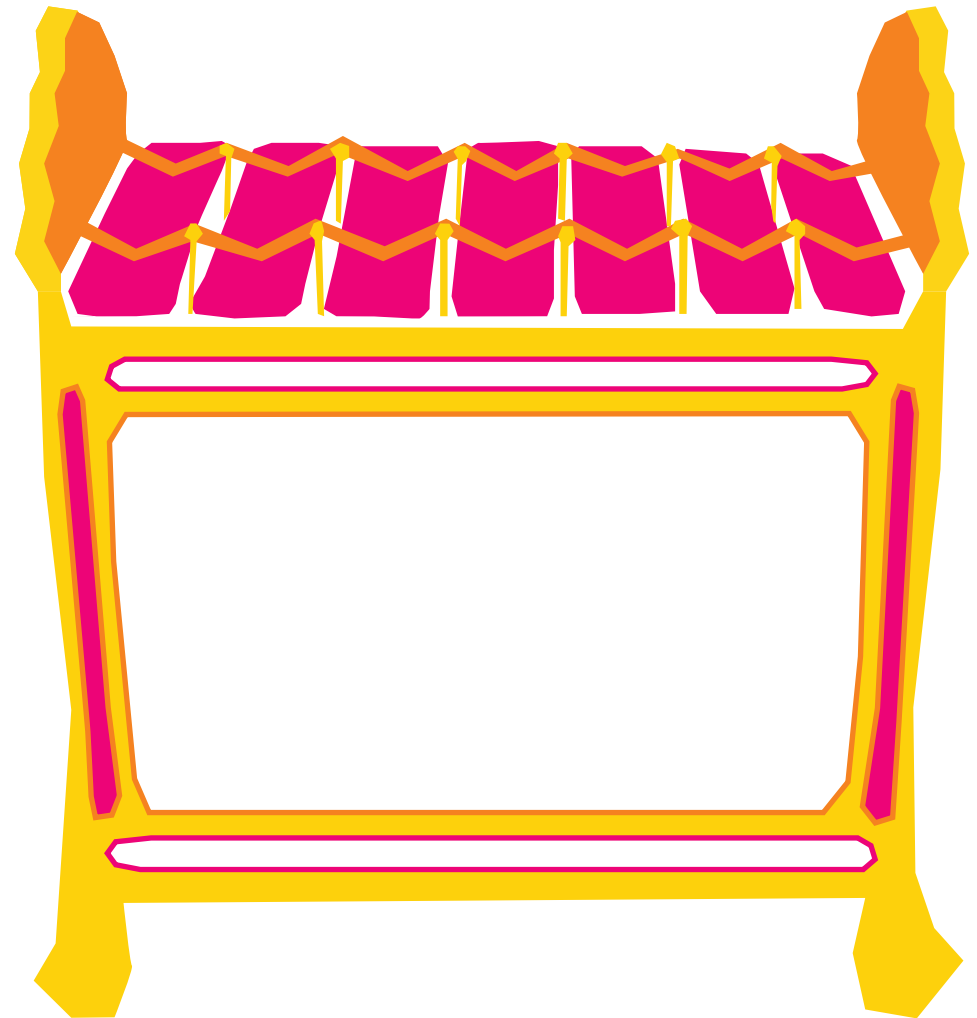
BALI	<i>a small island in the Indonesian archipelago</i>	KEBYAR	<i>loud, fast music played in competitions</i>
BAPAK	<i>father</i>	KECAK	<i>Balinese music using only voices</i>
BELEGANJUR	<i>Balinese processional music</i>	KENDANG	<i>drum</i>
CENG-CENG	<i>cymbals</i>	KETUT	<i>name for fourth-born</i>
DUA	<i>two</i>	MADE	<i>name for second-born</i>
GAMELAN	<i>Balinese percussion orchestra</i>	NYOMAN	<i>name for third-born</i>
GANGSA	<i>bronze xylophone</i>	SATU	<i>one</i>
GENTORAK	<i>bell tree</i>	SULING	<i>bamboo flute</i>
GONG	<i>gong</i>	TIGA	<i>three</i>
IBU	<i>mother</i>	WAYAN	<i>name for firstborn child</i>

W K A F A G K V T D T A V I V
P T X C N O E E J D I U C L N
O U Q O L X B D N G G M K A W
B A G J V K Y A F E A E E B T
Y C K X C G A M O N S Z N F Q
M D E X A R R R N T G C D R E
R W C N U S G I H O N Y A U O
V O A R G E H X L R A Z N J K
M U K K T C Y Y I A G C G N K
V B C I T A E N A K H B C A R
V A U B S P U N Y Z T P H G O
S P T U Z L N D G O T U T E K
U A A A I X N A L E M A G L X
X K S Y R G N I L U S A T E H
H Q X Q **N A Y A W** J F R N B Z

A Piece of Art

The instruments used in Balinese music are designed like a piece of art, especially the brass xylophones called **gangsa**. Some designs even tell stories!

Draw your own designs in the white spaces on the front of the gangsa below.



WHO ARE YOU? Family Names in Bali

Most people in Bali, boys and girls, get one of just four first names, which tells their birth order:

Wayan	<i>first child</i>
Made	<i>second child</i>
Nyoman	<i>third child</i>
Ketut	<i>fourth child</i>

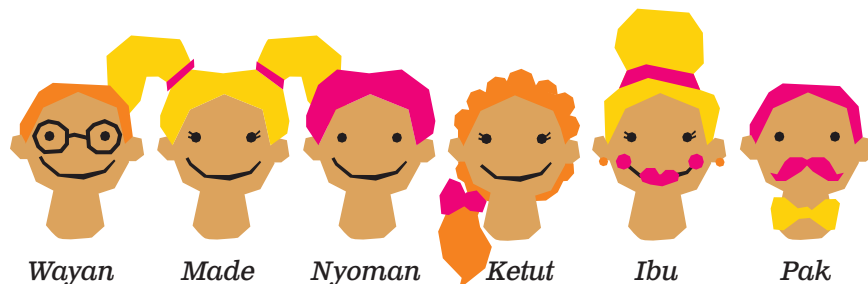
If a family has a fifth child, the names start over again, with another Wayan, then Made and so on! Most often, people call each other only by their birth order name.

If addressing an adult directly, they might just say **Pak** (short for Bapak, or father/mister) or **Ibu** (mother/mrs.). The director of the BYU gamelan says his friends in Bali call him Pak Jeremy.

Write your name, birth order, and the names and birth order of family and friends, then write what their names would be in Bali!

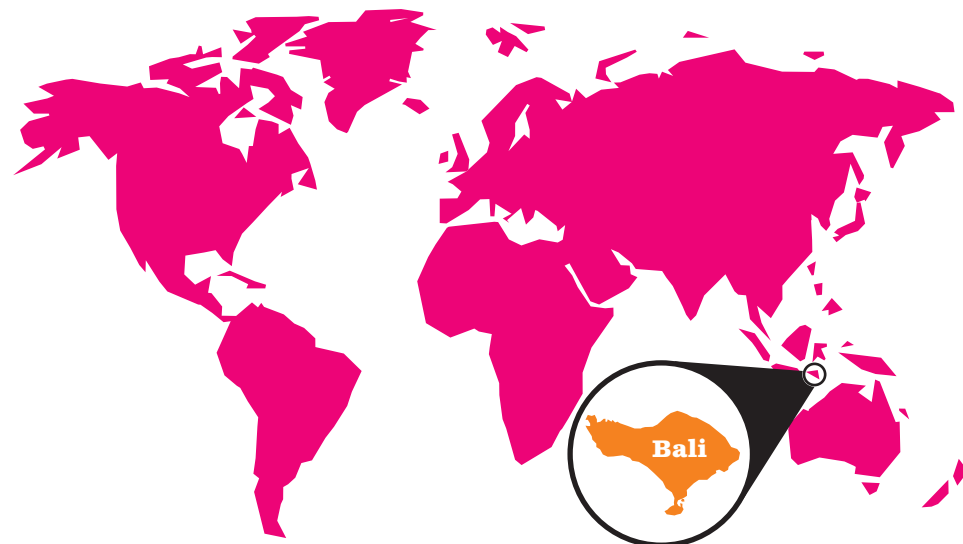
Example: Name and birth order Silvia, 3rd Name in Bali Nyoman

- | | |
|-----------------------------------|---------------------|
| 1. My name and birth order: _____ | Name in Bali: _____ |
| 2. Name and birth order: _____ | Name in Bali: _____ |
| 3. Name and birth order: _____ | Name in Bali: _____ |
| 4. Name and birth order: _____ | Name in Bali: _____ |
| 5. Name and birth order: _____ | Name in Bali: _____ |
| 6. Name and birth order: _____ | Name in Bali: _____ |



Fun Facts About Bali!

- Balinese gamelan instruments are tuned in a special way that makes the sound wiggle and shimmer!
- To make a big gong, artisans take a big chunk of bronze, get it really hot, and then hammer it into the shape you see. It is VERY hard work. The gong is the most important instrument in the gamelan.
- Balinese farmers have a special way of growing rice called “**subak**.” It means sharing the water very carefully so that the same water helps many different farmers.
- Balinese people use three different calendars at the same time: the 365-day calendar that we use, a lunar calendar (based on the phases of the moon), and a 210-day calendar that marks important religious days.
- There is a sacred mountain in Bali called **genung agung**—it is as tall as the big mountain (Timpanogos) that you can see when you go outside. It has a very large and special temple built on it. Also, the mountain is an **active volcano**.



A-MAZE-ING!

Help the children find a way through the rice paddies to the gamelan concert by drawing a line to show the way!

START



Free admission to our Family Concert Series is provided by a generous donation from the Beverley Taylor Sorenson Foundation. We are grateful for their support.

Join Us at Our Final Family Concert of the Season!

Put it on your calendar now!

Music for the Young at Heart!

BYU Wind Symphony — Shawn Smith, *conductor*

Saturday, April 9, 2022, 11 a.m.

de Jong Concert Hall

Prepare to be amazed by the sounds of brilliant brass, wondrous woodwinds, and powerful percussion! Join us as conductor Shawn Smith and the BYU Wind Symphony perform a concert that will light up your imagination, including cartoon music, children's songs, and music from the popular children's book *Goodnight Moon*.

SCAN TO ENTER OUR DRAWING!

Please complete this feedback form before the concert starts for a chance to win a prize! We can't wait to hear from you!

Use your phone's camera to scan the code. Then tap the link and our Google form will guide you from there!

tinyurl.com/5n7ffxde

Thank you!



FOR INFORMATION ABOUT NEXT YEAR'S FAMILY CONCERTS

Visit this link: **<http://familyconcerts.byu.edu/>**

THE BYU YOUNG MUSICIANS ACADEMY is a series of weekly music classes for preschool children and their parents. The program runs **September 2022–April 2023** and is held on Saturday mornings. Classes are available for children ages 20 months to 6 years old. Registration opens in **April 2022**.